

Quality features

Super light weight and super portable, the Grandview Micro Pull Up Screen is perfect for:

- The Business Traveller
- Expos and Presentations
- Micro-projectors

Or anywhere where a small but effective projected image is needed.

What's an aspect ratio?

An aspect ratio is the shape of the projected image and it changes depending on what you are watching. Overhead projectors are mostly square; TV is mostly 4:3; movies can be 16:9 (also known as widescreen) or even wider like cinemascope. Sounds confusing? It can be.

GV Micro Pull Up screens overcome this problem by being completely flexible – they suit any shaped output at all.

So just sit back and enjoy.



Grandview

Imported and distributed in Australia by

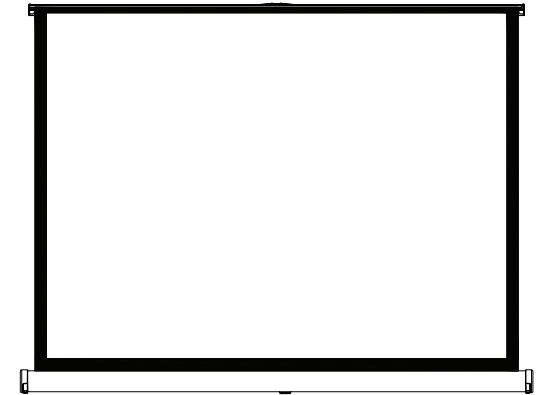


1800 251 367

orders@ambertech.com.au

ambertech.com.au

Grandview



Grandview
Micro Pull Up
User Manual

To the owner

Congratulations on purchasing a Grandview Micro Pull Up Screen, designed to produce the sharpest, most pleasing pictures with maximum convenience.

Protecting your screen:

To ensure long lasting viewing enjoyment, always keep the screen rolled up in its protective case when not in use. Always examine both the front and back of surface before retracting the screen into its case to make sure it is free of dust, dirt, insects or foreign matter. Use a soft brush or cloth to gently remove any foreign particles.

Cleaning your screen:

NEVER attempt to use any solvents, chemicals or abrasive cleaners on the screen. Use a mild detergent with warm water to remove any marks on the surface or screen case. Always immediately pat dry the screen with a soft cloth or towel after cleaning.

Do not rub screen image area

Using your screen:

Position the screen facing the projector on a flat surface. Release the leg support feet as shown below.

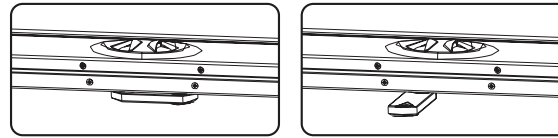


Fig 1

Fig 2

When unlocked slowly pull the screen up to the desired height.

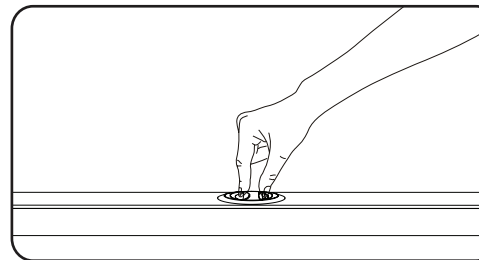


Fig 2.1

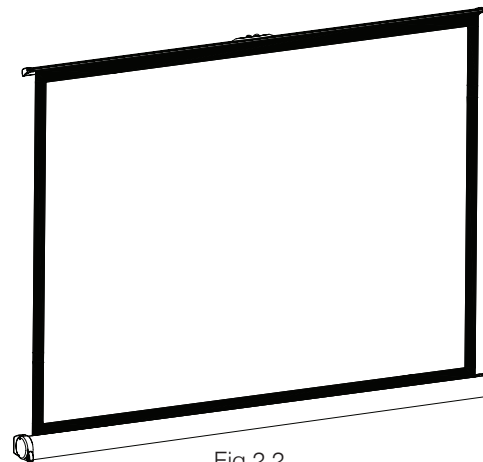


Fig 2.2

Your screen is now ready for your viewing enjoyment

Putting your screen away

Slowly push the screen down and ensure the cover is locked into the casing.

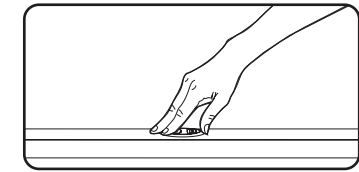


Fig 3.1

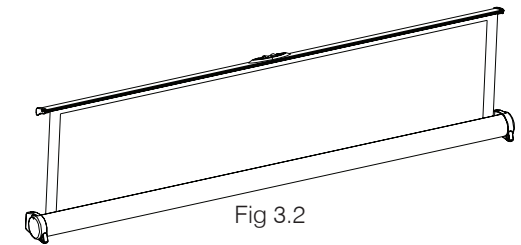


Fig 3.2

Turn the support feet parallel to the casing.

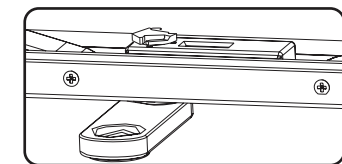


Fig 4.1

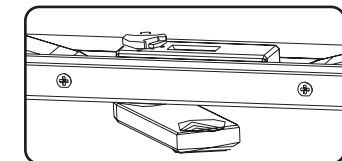


Fig 4.2

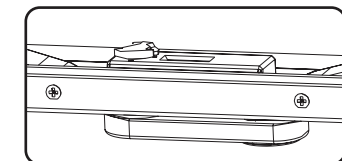


Fig 4.3